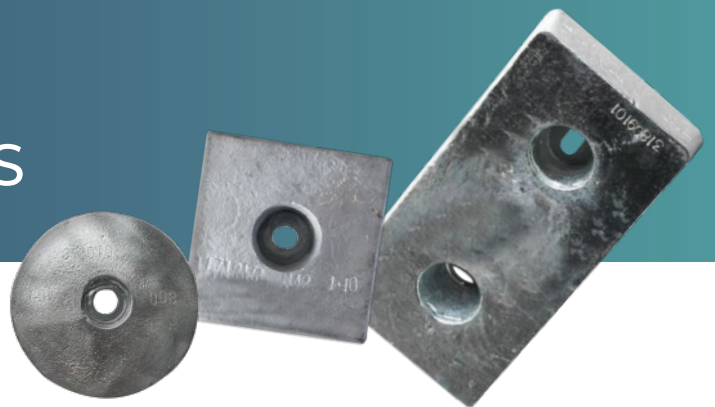




MAGNESIUM CONDENSER ANODES



CELEBRATED ENTERPRISE IN CATHODIC PROTECTION



JENNINGS ANODES

MAGNESIUM CONDENSER ANODES

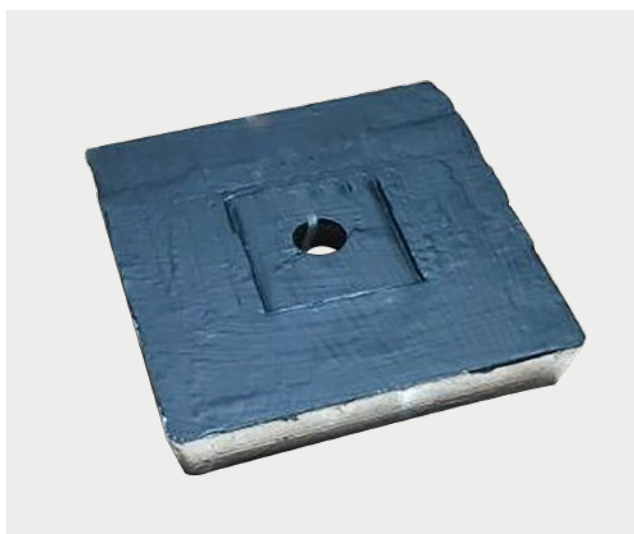
DATA SHEET

To address the applications in fresh water or aqueous environments where the electrolyte resistivity is higher, our anodes are cast into rectangular, square, circular shapes for a variety of installation possibilities with minimum attachment.

■ Quality Substrate Material

Constructed from high grade magnesium alloy, our condenser anode conforms to meet American standard ASTM B843-AZ63B.

| Element | Content |
|----------------------|---------------|
| Aluminum (Al) | 5.30% ~ 6.70% |
| Manganese (Mn) | 0.15% ~ 0.70% |
| Zinc (Zn) | 2.5% ~ 3.5% |
| Silicon (Si) | 0.1% max. |
| Copper (Cu) | 0.02% max. |
| Iron (Fe) | 0.03% max. |
| Nickel (Ni) | 0.02% max. |
| Other Impurity(each) | 0.05% max. |
| Total Impurities | 0.30% max. |
| Magnesium (Mg) | Remainder |



■ Custom-made Electro-potential Options

Our magnesium condenser anode is normally cast with H-1 alloy for standard potential of -1.55 volts relative to saturated calomel electrode(SCE).

| Technical Measurement | Performance |
|-----------------------------|---------------------------|
| Open Circuit Voltage (-V) | 1.50 ~ 1.55 |
| Closed Circuit Voltage (-V) | 1.45 ~ 1.50 |
| Current Capacity | 550 A.h/lbs (1230 A.h/kg) |
| Current Efficiency | 55% min. |

* High potential magnesium anode is available upon request.

■ Optional Plastisol Coating

Our condenser anode is available as either bare or plastisol coated. The plastisol (polyvinyl chloride) coating on the sides, ends, and faying surfaces serves as an excellent current barrier shield.

APPLICATIONS

- Heat exchanger
- Condenser water box
- Cooling tower
- Intercooler
- Tank Interior

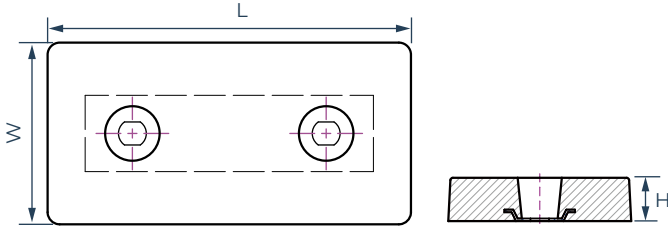


MAGNESIUM CONDENSER ANODES

DATA SHEET

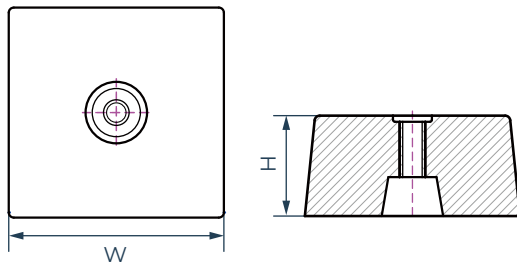
SPECIFICATIONS

■ Rectangular Type Anode



| Item No. | Width | Length | Height | Weight |
|-------------|------------------|-------------------|-----------------|----------------------|
| JA-MG-DS11 | 3.0" (75 mm) | 5.9" (150 mm) | 1.2" (30 mm) | 1.1 lbs (0.5 kg) |
| JA-MG-DS22 | 3.9" (100 mm) | 7.9" (200 mm) | 1.2" (30 mm) | 2.2 lbs (1.0 kg) |
| JA-MG-DS53 | 5.9" (150 mm) | 11.8" (300 mm) | 1.2" (30 mm) | 5.3 lbs (2.4 kg) |
| JA-MG-DS143 | 7.9" (200 mm) | 11.8" (300 mm) | 2.6" (65 mm) | 14.3 lbs (6.5 kg) |

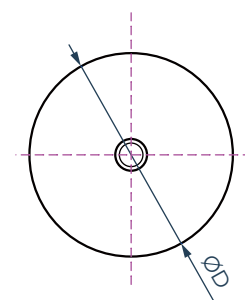
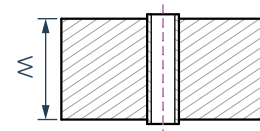
■ Square Type Anode



| Item No. | Width | Height | Weight | Insert Dimensions |
|-------------|------------------|------------------|----------------------|---|
| JA-MG-SS11 | 3.9" (100 mm) | 1.2" (30 mm) | 1.1 lbs (0.5 kg) | / |
| JA-MG-SS18 | 3.9" (100 mm) | 2.0" (50 mm) | 1.8 lbs (0.8 kg) | / |
| JA-MG-SS75 | 8.0" (203 mm) | 2.0" (51 mm) | 7.5 lbs (3.4 kg) | $\varnothing 3/4"$ ($\varnothing 19.05$ mm) |
| JA-MG-SS150 | 8.0" (203 mm) | 4.0" (102 mm) | 15.0 lbs (6.8 kg) | $\varnothing 3/4"$ ($\varnothing 19.05$ mm) |

■ Round Type Anode

| Item No. | Diameter | Height | Weight | Insert Dimensions |
|-----------|------------------|------------------|---------------------|--|
| JA-MG-R24 | 5.0" (127 mm) | 2.0" (51 mm) | 2.4 lbs (1.1 kg) | $\varnothing 1/2"$ ($\varnothing 12.7$ mm) |
| JA-MG-R49 | 5.0" (127 mm) | 4.0" (102 mm) | 4.9 lbs (2.2 kg) | $\varnothing 1/2"$ ($\varnothing 12.7$ mm) |



Notes: All dimensions and weights are nominal. The parameter provided is subject to variation in material compositions and Jennings Anodes foundry tolerance.

TESTING DETAILS

We employ ISO 9001:2015 quality management system and rigorous internal testing standards to ensure the optimum lifespan and performance of our Anodes. Each anode is labelled with a unique serial number for quality tracking.

| Technical Measurement | Chemical Composition | Electrochemical Performance | Physical Properties |
|-----------------------|---|---|---|
| Testing Standard | ATSM B843 | ATSM G97 | Foundry ITP |
| Testing Content | Chemical Analysis | Circuit Potential Current Capacity Current Efficiency | Surface Finish Dimension & Weight |
| Equipment | Optical Emission Spectrometer OBLF QSN 750 | Electrochemical Analyzer EPI 200 | Calibrated Digital Measuring Devices |

* Third party testing is conducted by customer's special request at extra charge.

PACKAGING INFORMATION

We have strict packing protocols to guarantee safe delivery of our products. Clear shipping marks and documentation make delivery acceptance straightforward and simple.

■ Square Type Anode

| Item No. | Anode Qty (per pallet) | Pallet Dimensions (L x W x H) | Weight | |
|-------------|------------------------|--|----------------------|----------------------|
| | | | N.W. | G.W. |
| JA-MG-SS75 | 200 | 41" x 41" x 22" (1050 x 1050 x 550mm) | 1598 lbs (725 kg) | 1698 lbs (770 kg) |
| JA-MG-SS150 | 100 | 41" x 41" x 22" (1050 x 1050 x 550mm) | 1510lbs (685kg) | 1609lbs (730kg) |

■ Round Type Anode

| Item No. | Anode Qty (per pallet) | Pallet Dimensions (L x W x H) | Weight | |
|-----------|------------------------|--|----------------------|----------------------|
| | | | N.W. | G.W. |
| JA-MG-R24 | 500 | 41" x 41" x 22" (1050 x 1050 x 550mm) | 1213 lbs (550 kg) | 1312 lbs (595 kg) |

Remarks: Custom packing is available upon request.



Worldwide Service Network

Our worldwide network of sales and service centers can provide immediate advice and assistance on the complete range of products.

Global Headquarter

3115 Fry Road Ste 303, Katy, Texas 77449, United States

Email: sales@jenningsanodes.com
Tel: +1 (281) 501 8398 / +1 (713) 799 3884

www.jenningsanodes.com

UK Office

Tatham Street, Hendon, Sunderland SR1 2AG, United Kingdom

Email: sales@jenningsanodes.co.uk
Tel: +44 (0) 191 510 8843
Fax: +44 (0) 191 514 7749

www.jenningsanodes.co.uk

Asia Pacific Office

120 Lower Delta Road, #07-13 Cendex Centre, Singapore 169208

Email: inquiries@jenningsanodes.com
Tel: +65 6715 1514



View Our Website



Follow Us On LinkedIn